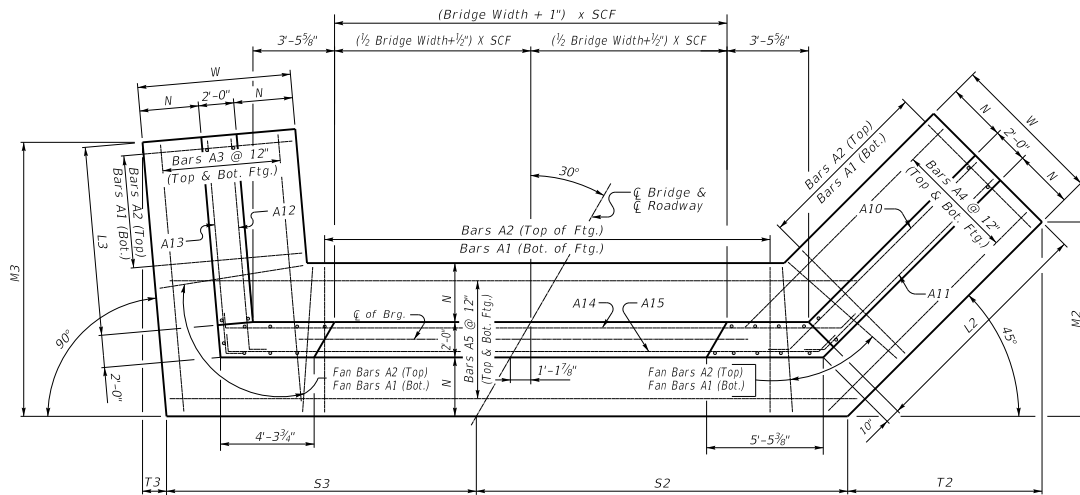


30° SKEW VARIABLE BRIDGE WIDTH 2:1 FILL SLOPES WINGS SKEWED 25% FROM ROADWAY TO BREASTWALL

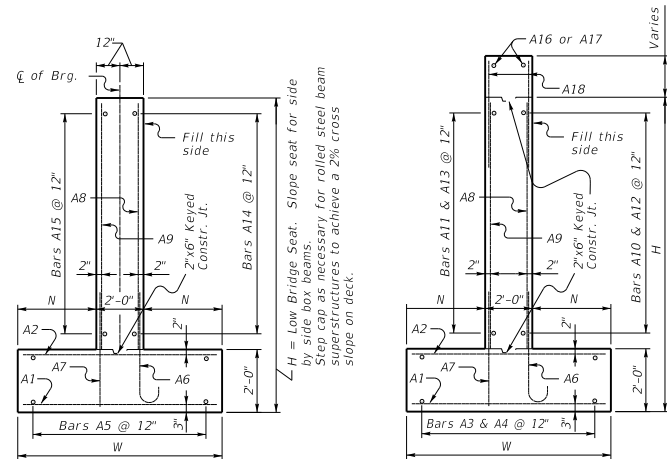
ABUTMENT SKEW CORRECTION FACTOR (SCF) = 1.155



(Left Skew as shown; right skew opp. hand)

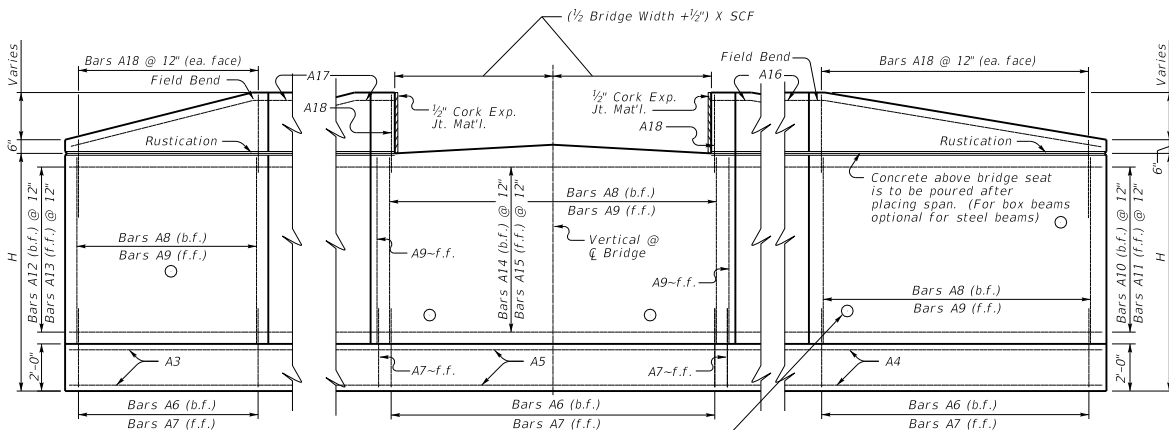
PLAN

NOTE: Trim A16 & A17 bars if necessary



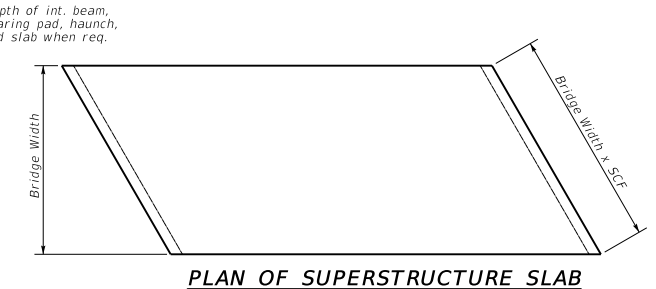
WALL SECTION

WING SECTION

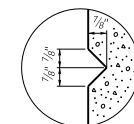


ELEVATION

Place 4" weep hole drains at 8'-0" centers at such elevation as to afford best drainage of backfill, in accordance with the Standard Specifications.



PLAN OF SUPERSTRUCTURE SLAB



RUSTICATION GROOVE

KENTUCKY
DEPARTMENT OF HIGHWAYS
30° SKEW VARIABLE
WIDTH ABUTMENT
25% SKEWED WINGS

STANDARD DRAWING NO. BSA-033

SUBMITTED *Bert Adams* 02-26-20
DATE DIRECTOR DIVISION OF STRUCTURAL DESIGN
APPROVED *[Signature]* 02-26-20
DATE STATE ENGINEER